



Toll Free (800) 826-6342
Info@Omega.com
Omega.com

HHP400 Series Smart Manometer

Omega Tethered
Sensor (optional
accessory)



The HHP400 is a portable pressure instrument that offers flexible features to help meet the demand of your everyday pressure measurement needs. This smart manometer can document up to 240 readings in over 30 engineering units. It also has several features including MIN/MAX capture, adjustable damping rates, and auto shut-off. The HHP400 features NIST traceable accuracy up to $\pm 0.025\%$ of full-scale.

Expand the capabilities of the HHP400 by adding a tethered sensor to measure a second pressure. Our tethered sensors are interchangeable, giving extra flexibility to your measurement needs. Choose from any available pressure sensor type and range and connect your accessory tethered sensor via a locking tether cable.

Our HHP460 barometric units have altitude displayed in feet or meters, indicated air speed in MPH, KNOTS, and KM/H, and has corrections for altitude and sea level.

Features on HHP452

- HPP400 Suite application for configuration, calibration, and data logging
- Backlight with 4 levels: Off, Low, Medium, High
- Battery life display (0 % to 100%)
- USB communication
- Min/Max pressure capture
- Protective red boot
- Ships with calibration certificate traceable to NIST
- HHP452 can use a second sensor with the MTS Series of Tethered Modules (Pressure & Temperature)

Additional Features for HHP460

- Altitude displayed in feet or meters
- Indicated Air Speed in MPH, KNOTS, KM/H
- Corrections for Altitude and Sea Level

Applications

- Pressure Transmitter Calibration
- Leak testing for low pressure gas systems
- Pressure drop monitoring across filters
- Monitoring vacuum on condensers and pumps
- Pressure relief valve testing
- Hold function to snapshot pressure reading
- HHP460 units only: Testing and calibration of Altimeter and Air Speed Instruments

Omega Tethered Sensors

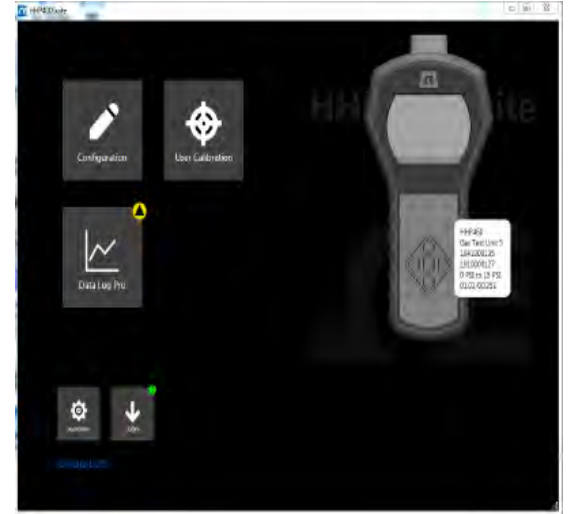
- Expand the capabilities of the HHP400 by adding an OTS to measure a second pressure.
- Choose any available pressure or temperature sensor type and range and connect your accessory OTS using the included 1 meter cable.
- This is an interchangeable sensor giving extra flexibility to your measurement needs.

HHP400 Suite

Our HHP400 Suite application is included with the HHP400 so you can configure HHP400 and OTS to streamline your daily measurement tasks.

Configure the Smart Manometer and sensors

Configure and download data logs, select measurement units and configure user defined units, turn on and off device functions, and calibrate your device using your local measurement standards.



	HHP452 Units	HHP460 Units
Pressure Accuracy	± 0.020% Full Scale + 0.005% of Reading	
Pressure Ranges for dry, non-corrosive gas media (Non-isolated)	<ul style="list-style-type: none"> 0 to 15, 30, 100 psi Absolute -1 to 1, -5 to 5, -14.5 to 15, 30, 50, 100 psi Differential -1 to 1, -5 to 5, -14.5 to 15, 30, 50, 100 psi Compound Additional ranges available with OTS 	<ul style="list-style-type: none"> 0 to 30 psi and 0 to 100 psi Absolute Additional ranges available with OTS
Pressure Ranges for gasses and liquid media compatible with 316SS (Isolated)	<ul style="list-style-type: none"> 0 to 15, 30, 100, 1000 psi Absolute -1 to 1, -5 to 5, -14.5 to 15, 30, 50, 100, 300, 500 psi Differential -14.5 to 15, 30, 50, 100, 300, 500, 1000, 3000 psi Compound Additional ranges available with OTS 	<ul style="list-style-type: none"> 0 to 30, 100 psi Absolute Additional ranges available with OTS
Measurement Units	Offering over 30 measurement units including psi, inH ₂ O, mBar, Bar, kPa, mmHg, cmHg, inHg, kg/cm ² , and user defined units - available with optional OTS	
Display Resolution	Up to 6 digits depending on pressure unit selected	
Dimensions with boot	<ul style="list-style-type: none"> Length 9.8 in (248.9 mm) from manifold to end of boot Width 5.2 in (132.1 mm) at widest point with boot Thickness 2.3 in (58.4 mm) 	
Connections	<ul style="list-style-type: none"> 1/8" Female NPT 316SS USB Omega Tethered Sensor (OTS) Port USB 	
Power	4 AA batteries	
OTS RTD Specifications	<p>Temperature Probe Accuracy</p> <ul style="list-style-type: none"> IEC 60751 PT100 class A Tolerance = ± (0.15 + 0.002 t) °C Probe measurement range: -50 °C to 250 °C 	
Temperature Specifications	<ul style="list-style-type: none"> Storage: -20 °C to 70 °C (-4 °F to 158 °F) Operating: -10 °C to 50 °C (14 °F to 122 °F) 	
Altitude		<ul style="list-style-type: none"> -2000.0 ft to 36,000 ft -609.6 m to 10,972.80 m
Indicated Air Speed		<ul style="list-style-type: none"> 0 knots to 660 knots 0 to 760 mph 0 km/h to 1223 km/h