

Six Channel Handheld Temperature Data Logger



With Touch Screen and Built-In Rechargeable Battery

RDXL6SD-USB



- ✓ Four Thermocouple Inputs and Two Pt100 RTD Inputs
- ✓ Display and Log All 6 Channels Simultaneously or Individually
- ✓ USB Interface with Free Software
- ✓ MODBUS Protocol for Integration Into 3rd Party Software
- ✓ Built-In Stand
- ✓ Scheduled and Manual Logging Start/Stop
- ✓ 4 GB SD Card Stores Up to 2 Years of Data
- ✓ Display Maximum, Minimum, Average and Standard Deviation
- ✓ Display Temperature Difference Between Any 2 Channels
- ✓ USB or Mains Powered (With Adaptor)
- ✓ Alarm Indication for Each Channel

The RDXL6SD-USB is a six-channel touch screen data logger that accepts four thermocouple and two RTD inputs. Each channel has individually configurable HI/LO alarms. The intuitive touch screen interface allows each channel to be configured separately for input type, math, alarm and display options. All six channels can be displayed and logged simultaneously or individually. Data can be logged as fast as once a second and is stored on the included 4 GB SD card in Excel® compatible format.

Specifications

Inputs: 4x thermocouple inputs for use with miniature thermocouple connectors, and 2 x spring clamp terminals for 2 or 3-wire RTDs, 28 to 16 AWG

Input Temperature Range:

- Type J: -200 to 1200°C
- Type K: -200 to 1372°C
- Type T: -200 to 400°C
- Type R: 0 to 1768°C
- Type S: 0 to 1768°C
- Type N: 0 to 1300°C
- Type E: -200 to 1000°C
- RTD: -200 to 850°C

Temperature Accuracy:

- For Thermocouples: ±0.1% or 0.8°C
- For RTD: ±1.0% or 1.0°C



Thermocouples not included.

RDXL6SD-USB shown smaller than actual size.

Temperature Resolution: 0.1° for temperatures below 1000°C or °F, 1° for temperatures above 1000°C or °F

Display: 72 mm (2.83") resistive touch TFT, 320 x 240 pixels, backlit

Configurable Parameters: Temperature units, alarms, signal processing, date and time, data logging, power options, graph channels

Temperature Units: °F or °C

Alarm Configuration: 12 x alarms (2 per channel) with adjustable level, individually configurable as HI or LO

Signal Processing: Average, minimum, maximum, standard deviation, 2-channel temperature difference

Display Response Time: 1 second

Operating Temperature: 0 to 50°C (32 to 122°F)

Power Supplies: Built-in rechargeable battery, USB, or 5 Vdc adaptor (included)

Battery Life: 32 hour logging with full display brightness; up to 96 hours while logging in power saving mode

Weight: 200 g (7 oz) without thermocouples

Dimensions: 136 W x 71 H x 32 D mm (5.35 x 2.8 x 1.25")

Data Logging Specifications

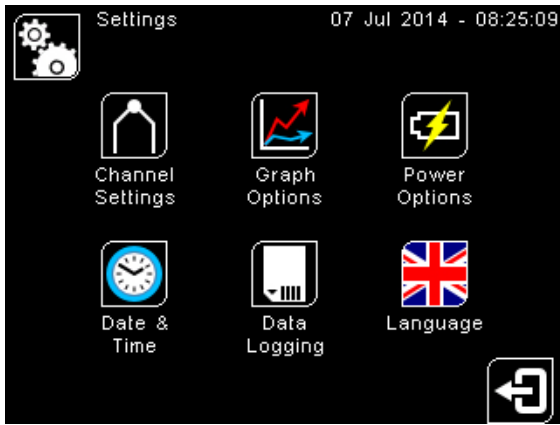
Data Logging Interval: 1 to 86,400 seconds (1 day)

Maximum SD Card Capacity: 32 GB SD Card (4 GB included)

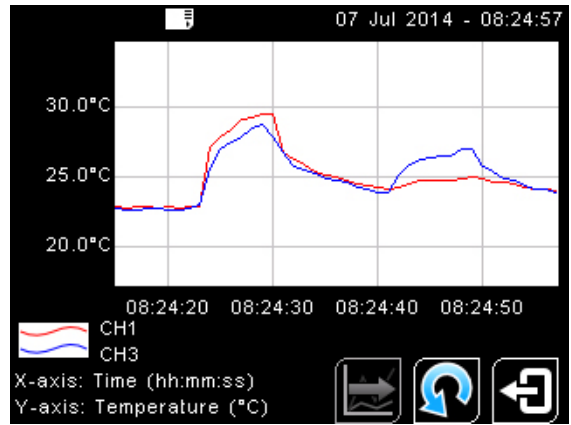
Variables Logged: Measured temperature, cold junction temperature, alarm events

File Format: .csv (can be imported to Excel)

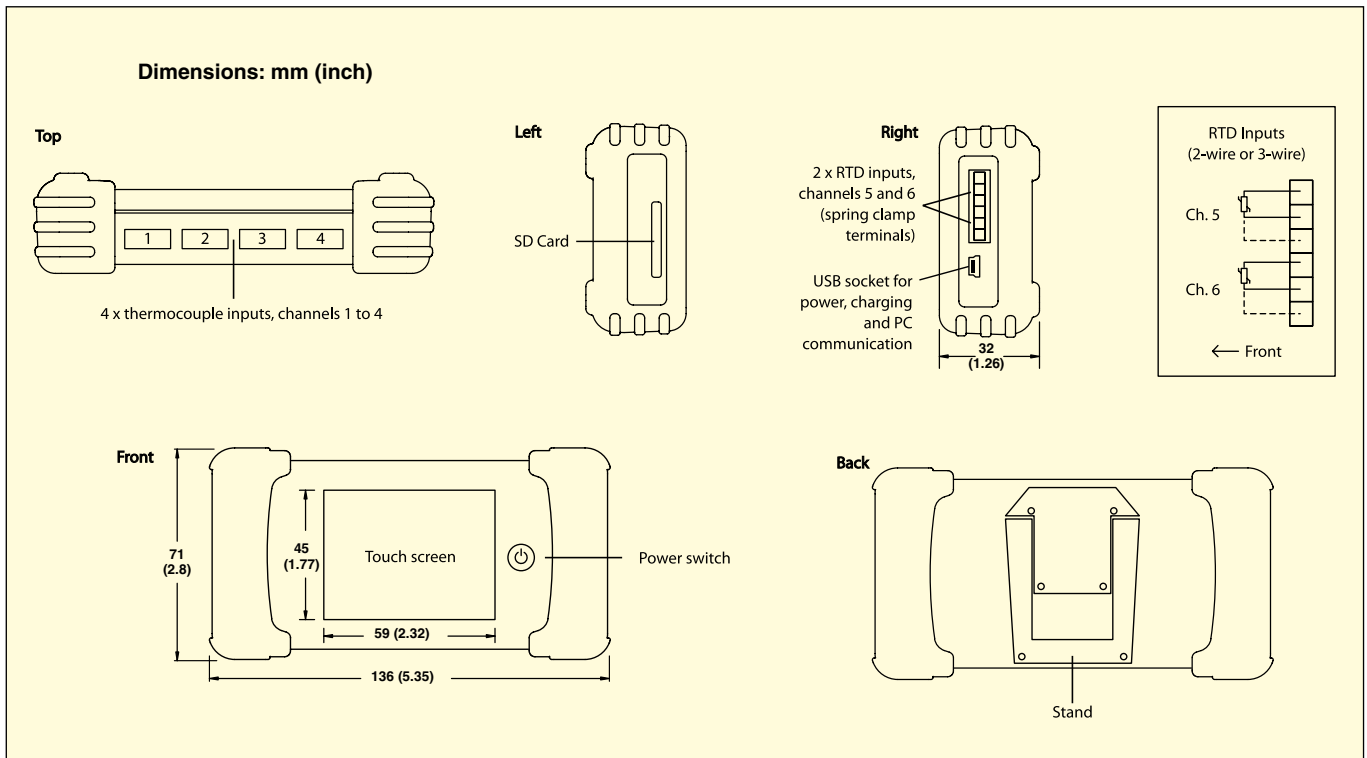
Configurable Parameters: Sample period, number of samples, scheduled start date and time



Intuitive Touch Screen Interface
Fully configurable, no additional hardware is required for configuration. Each channel is configurable separately for input type, maths, alarms and display options.



Temperature Graph
Two selectable channels are displayed. Scroll back in time to view chart history and data logging points.



To Order

| Model No. | Description |
|--------------------------|--|
| RDXL6SD-USB | 6-channel handheld temperature data logger |
| RDXL6SD-USB-CAL-3 | 6-channel handheld temperature data logger with NIST traceable calibration certificate with points |

Accessories

| Model No. | Description |
|-----------------------|---|
| RDXL6-ELMAU | Spare 5 Vdc power adaptor |
| 5SC-GG-K-30-36 | Type K thermocouples with mini plug and spool cap (pack of 5) |

Comes complete with 5 Vdc adaptor, 4 GB SD card, USB cable, built-in battery, and operator's manual.