

Miniature Panel Jacks



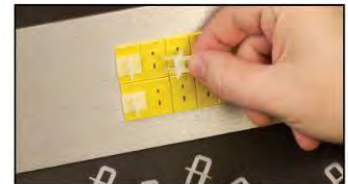
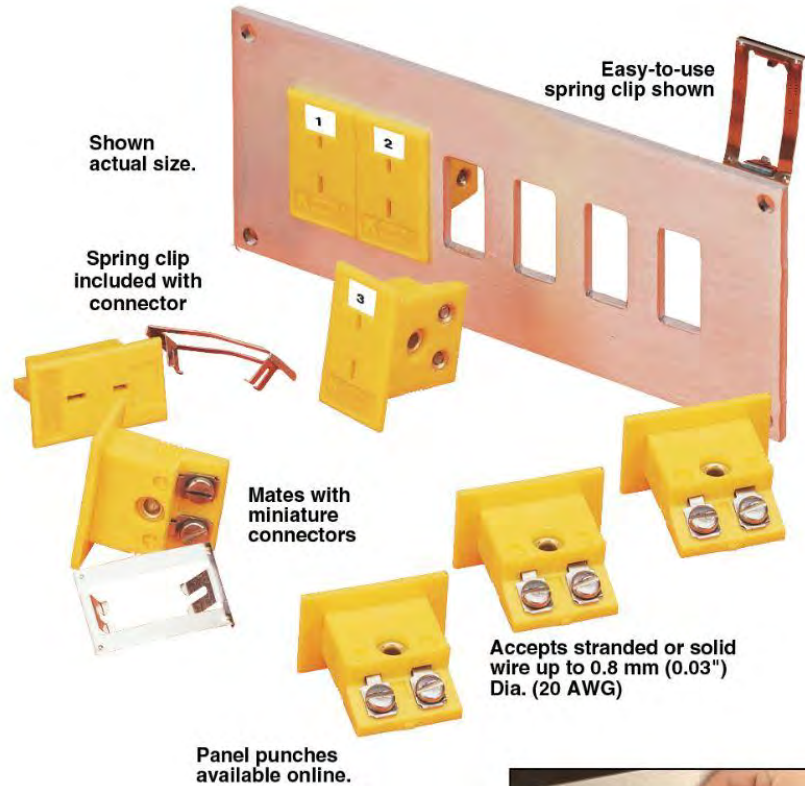
MPJ Series

- ✓ Compact Size
- ✓ Easy Mount with Spring Clip
- ✓ Accessible Terminal Screws
- ✓ Color-Coded
- ✓ Accepts OMEGA's as well as all Industry Standard Miniature Male Connectors
- ✓ Glass-Filled Nylon Rated from -29 to 180°C (-20 to 356°F)

Note: Minor discoloration of connector may occur between 150°C (302°F) and 180°C (356°F). Electrical properties are not affected.

The MPJ Miniature Panel Jack requires less than half of the panel area required by the standard size version. A simple push-on clip is all that is required to retain the connector in a rectangular cutout, or the optional MSS snap strip can be used to mount a row. Angled terminal screws allow wiring to be done after panel assembly.

- 8.1 x 16.7 mm (0.32 x 0.66")
Cutout Required
- 14.3 mm (0.56") Centers Horizontally
- 23.8 mm (0.94") Centers Row to Row Minimum



We make running changes when technical advances allow. Check at time of ordering for additional features.

Extra Mounting Clips Available
 Model MH-MPJ-1. (each)
 Model MH-MPJ-5. (5-pack)
Optional ID Number Labels:
 Model 1-6S, for 1 thru 6
 Model 1-12S, for 1 thru 12
 Model 1-18S, for 1 thru 18
 Model 1-24S, for 1 thru 24
 Model 1-50S, for 1 thru 50
 Model 1-100S, for 1 thru 100

Discount Schedule	
1-10.....	Net
11-49.....	5%
50-99.....	10%
100-999.....	15%
1000-4999.....	20%
5000 and over.....	25%

To Order					
Alloy Code†	Type of Thermocouple Used With Connector	Compensating Alloy Used in Connector		Shell Color	Model Number (Female)
		+	-		
K	CHROMEALLOY®-ALOMEALLOY®	CHROMEALLOY®	ALOMEALLOY®	Yellow	MPJ-K-F
T	Copper-Constantan	Copper	Constantan	Blue	MPJ-T-F
J	Iron-Constantan	Iron	Constantan	Black	MPJ-J-F
E	CHROMEALLOY®-Constantan	CHROMEALLOY®	Constantan	Purple	MPJ-E-F
R/S	Pt-Pt/13%Rh	Copper	RNX/SHX	Green	MPJ-RS-F
G	W-W/26%Re	GPX	GNX	Red	MPJ-G-F
C	W/5%Re-W/26%Re	CPX	CNX	Red	MPJ-C-F
D	W/3%Re-W/25%Re	DPX	DNX	Red	MPJ-D-F
U	Uncompensated	Copper	Copper	White	MPJ-U-F
N	OMEGALLOY®	OMEGA-P®	OMEGA-N®	Orange	MPJ-N-F

Connectors come with mounting hardware (spring clip).
Note: Type U (Uncompensated) connectors are used with Type B thermocouples (Platinum/6% Rhodium-Platinum/30% Rhodium).
 † K, T, J, E, R, S, and B are ANSI designations.
Ordering Example: MPJ-K-F, Miniature panel jack for use with Type K female connector.